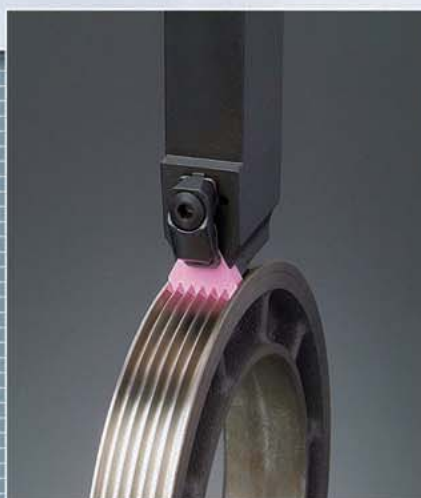


Poly-V



3 teeth P.190

4 teeth P.191

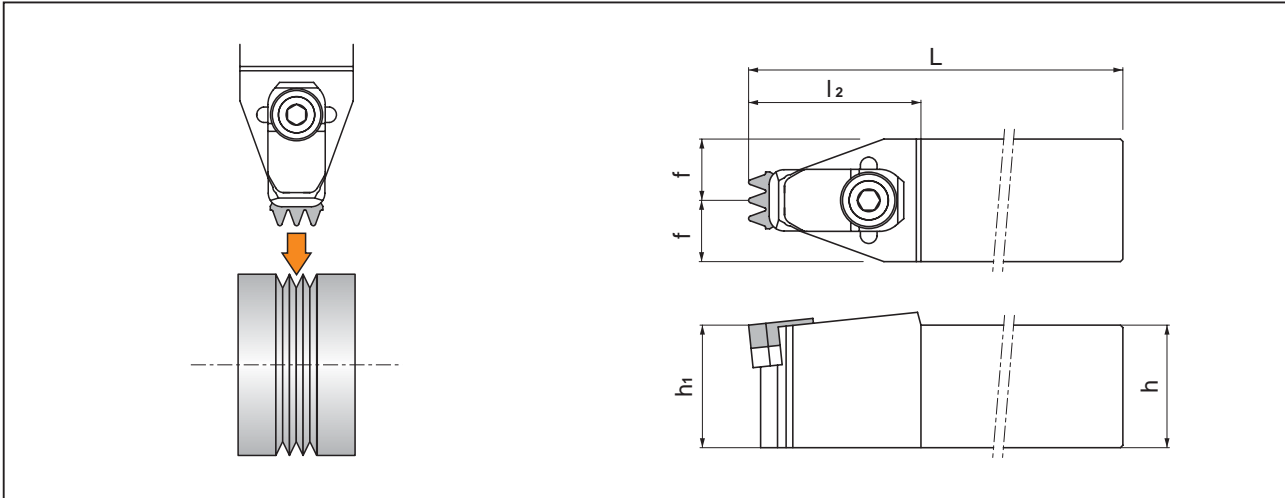
5 teeth P.192

6 teeth P.193

Poly-V Holder and Inserts

Poly-V

Clamp-on type

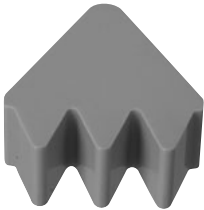
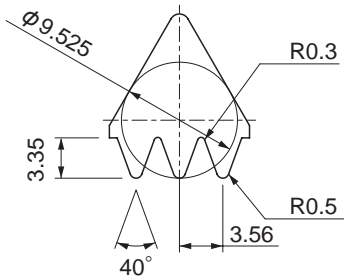
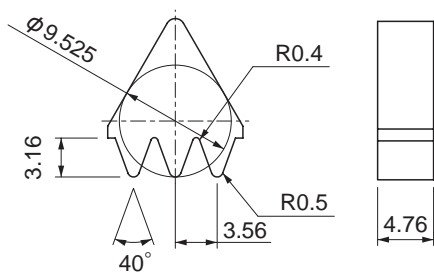


Item-No.	Stock	Dimensions (mm)						Insert	
		h	h1	b	L	f	l2		
Poly-V 2525 M-K3-C	●	25	25	25	150	12.5	30	PTM33	K305ENB
Poly-V 3225 P-K3-C	●	32	32	25	170	12.5			

Parts


Holder	Clamp	Thrust Plate	Shim	Shim-Screw
Poly-V 2525 M-K3-C	 2413-C	 9414-C	 K3-H	 1230
Poly-V 3225 P-K3-C				

Insert

Shape	PTM33K305ENB HW2	PTM33K30504ENB HW2
		

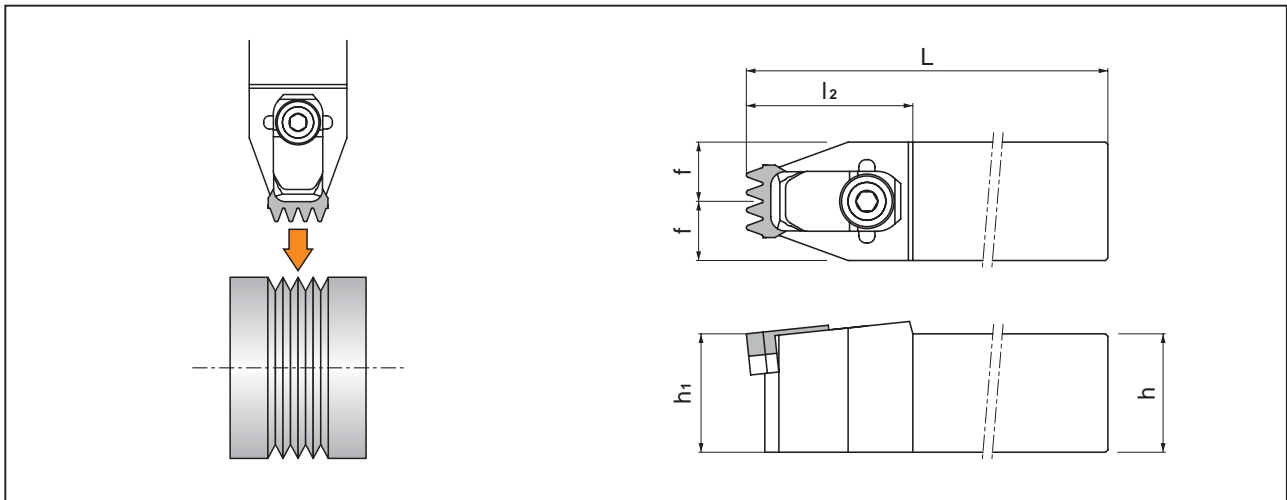
※ENB : R-horn

Recommendation

Insert Grade		Dry	Cutting speed (m/min)							Feed (mm/rev)					
			100	200	300	400	500	600	700	0.05	0.1	0.15			
HW2	●	●													

Poly-V

Clamp-on type

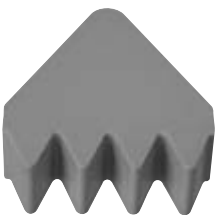
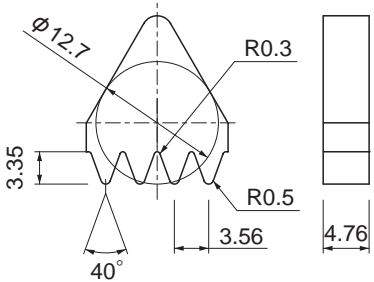
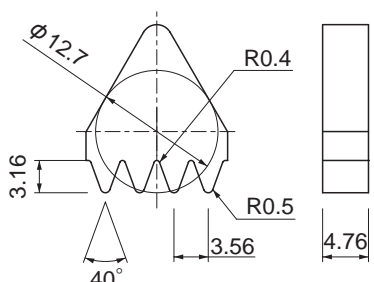


Item-No.	Stock	Dimensions (mm)						Insert	
		h	h1	b	L	f	l2		
Poly-V 2525 M-K4-C	●	25	25	25	150	12.5	34	PTM43	K405ENB
Poly-V 3225 P-K4-C	●	32	32	25	170	12.5			

Parts


Holder	Clamp	Thrust Plate	Shim	Shim-Screw
Poly-V 2525 M-K4-C	 2413-C	 9414-C	 K4-H	 1230
Poly-V 3225 P-K4-C				

Insert

Shape	PTM43K405ENB HW2	PTM43K40504ENB HW2
		

※ENB : R-horn

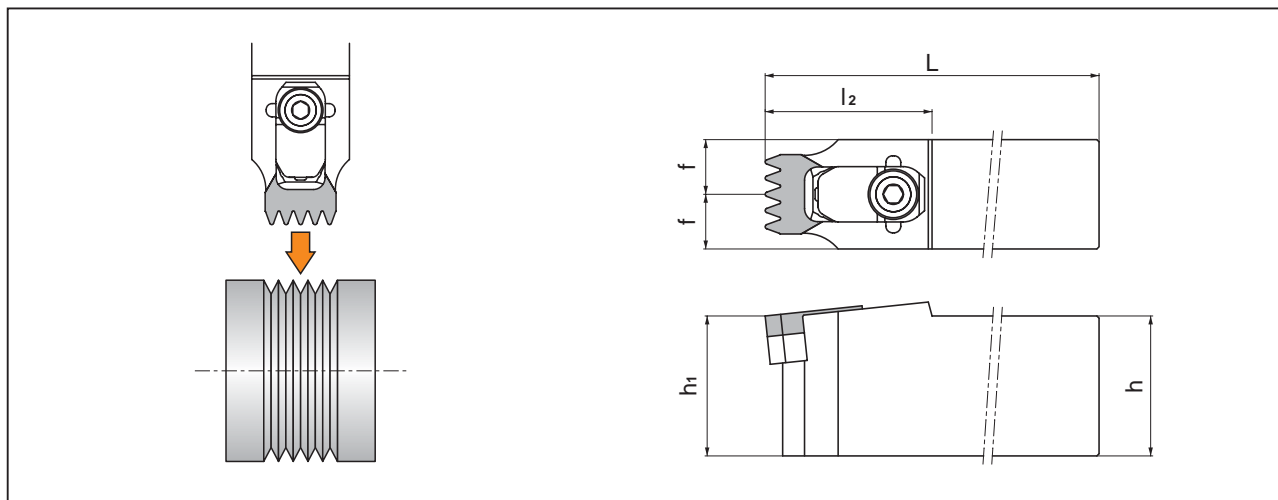
Recommendation

Insert Grade		Dry	Cutting speed (m/min)							Feed (mm/rev)										
			100	200	300	400	500	600	700	0.05	0.1	0.15								
HW2	●	●																		

Poly-V Holder and Inserts

Poly-V

Clamp-on type

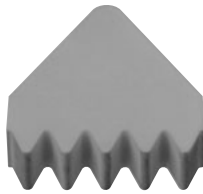
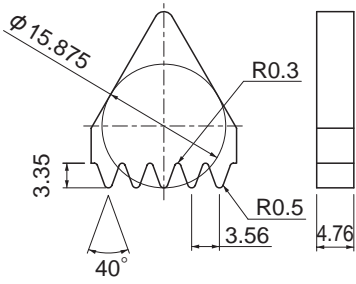
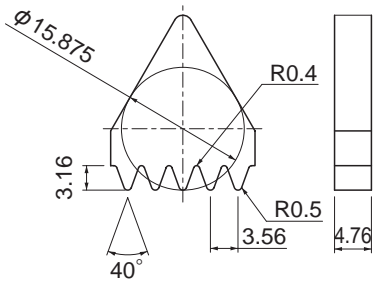


Item-No.	Stock	Dimensions (mm)						Insert	
		h	h1	b	L	f	l2		
Poly-V 3225 P-K5-C	●	32	32	25	170	12	35.5	PTM53	K505ENB K50504ENB

Parts


Holder	Clamp	Thrust Plate	Shim	Shim-Screw
Poly-V 3225 P-K5-C	 2413-C	 9414-C	 K5-H	 1230

Insert

Shape	PTM53K505ENB HW2	PTM53K50504ENB HW2
		

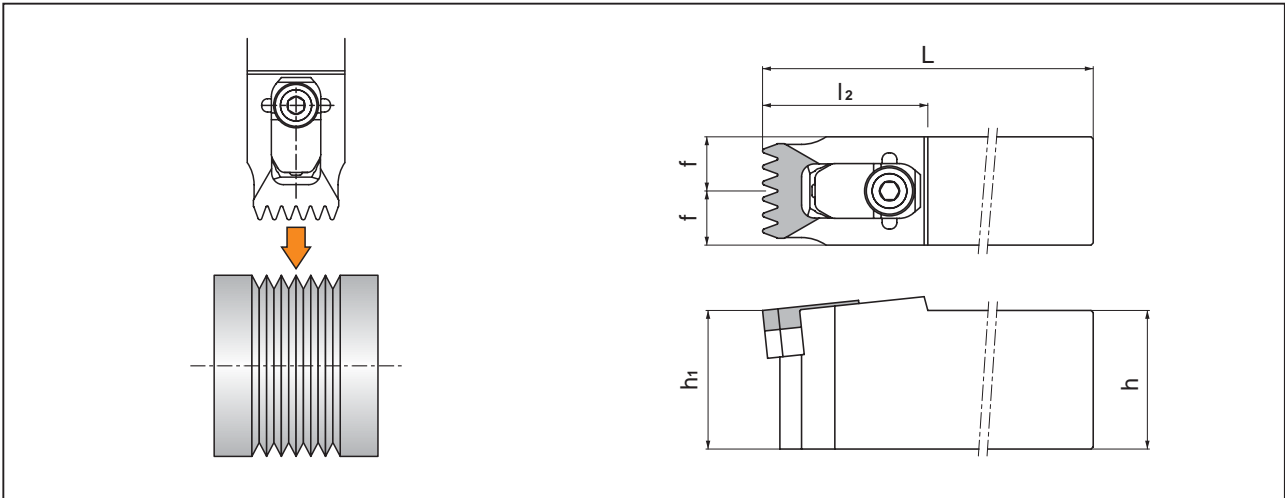
※ENB : R-horn

Recommendation

Insert Grade		Dry	Cutting speed (m/min)							Feed (mm/rev)				
			100	200	300	400	500	600	700	0.05	0.1	0.15		
HW2	●	●												

Poly-V

Clamp-on type

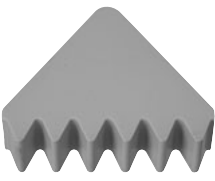
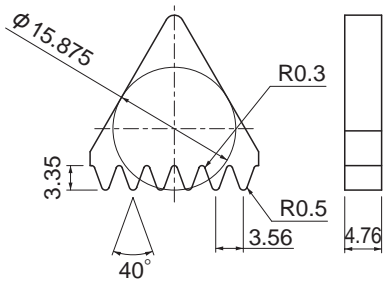
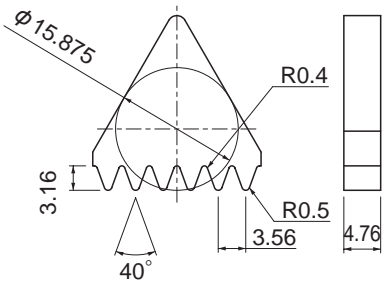


Item-No.	Stock	Dimensions (mm)						Insert	
		h	h1	b	L	f	l2		
Poly-V 3225 P-K6-C	●	32	32	25	170	12	35.5	PTM53	K605ENB K60504ENB

Parts


Holder	Clamp	Thrust Plate	Shim	Shim-Screw
Poly-V 3225 P-K6-C	 2413-C	 9414-C	 K6-H	 1230

Insert

Shape	PTM53K605ENB HW2	PTM53K60504ENB HW2
		

※ENB : R-horn

Recommendation

Insert Grade		Dry	Cutting speed (m/min)							Feed (mm/rev)				
			100	200	300	400	500	600	700	0.05	0.1	0.15		
HW2	●	●												