

Easy-quick NT

heimatec[®]
Präzisionswerkzeuge

Цилиндрический хвостовик, посадка осуществляется по цилиндру и торцу. Передача момента при помощи штифта смонтированного на привалочной плоскости упорного торца хвостовика, на торце приводного блока имеется ответное отверстие. Крепление с боку винтом в коническое отверстие (крепление типа Wohlhaupter).

Преимущества:

- Унификация, в одну головку могут устанавливаться различные виды инструментальных держателей.
- Простая и надежная система. Замена модулей производится без снятия головки со станка.
- Центрация по цилиндру гарантирует высокую точность соединения.
- Простота конструкции позволяет добиться высокой точности при изготовлении хвостовиков на универсальном оборудовании, что позволяет при необходимости изготавливать модули самостоятельно в условиях инструментального участка.



Das Werk einschließlich aller seiner Teile ist urheberrechtlich geschützt. Jede Verwertung außerhalb der engen Grenzen des Urheberrechtsgesetzes ist ohne Zustimmung der Rechteinhaber unzulässig und strafbar. Das gilt insbesondere für Vervielfältigungen, Übersetzungen, Mikroverfilmungen und die Einspeicherung und Verarbeitung in elektronischen Systemen.

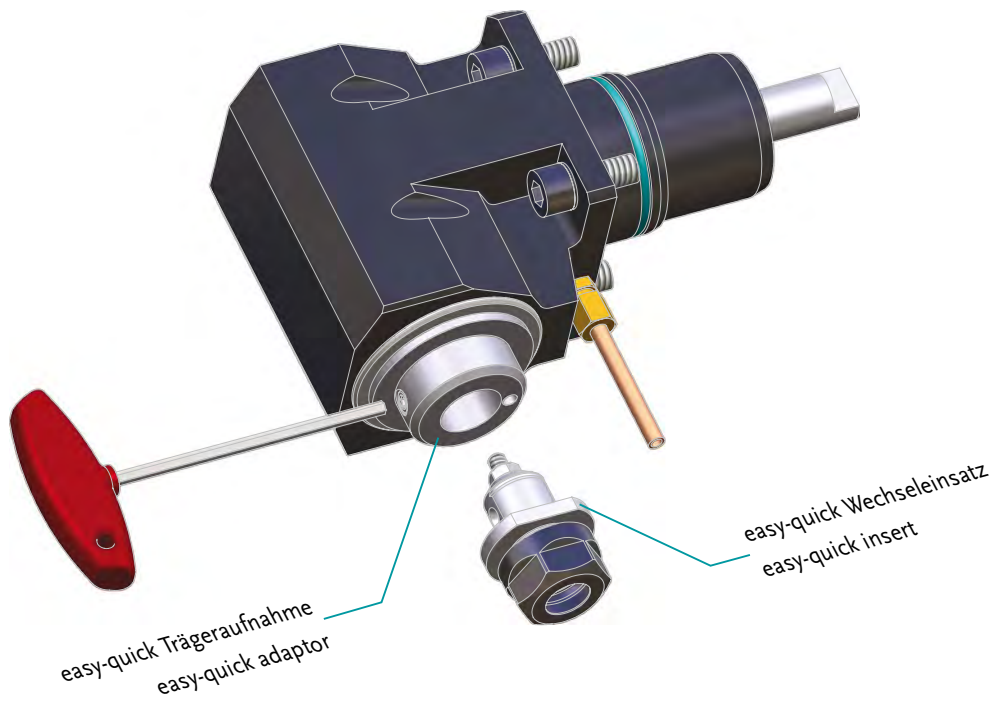
heimatec[®] GmbH behält sich Änderungen technischer Art jederzeit ohne Vorankündigung vor. Dies gilt insbesondere bei Anpassungen an neue oder geänderte internationale Normen oder bei Weiterentwicklungen unserer Produkte oder Herstellungsprozesse.

This catalogue, including all its parts, is protected by copyright. Each use outside the restricted limitations of the Copyright Act is inadmissible and liable to prosecution without the consent of heimatec. This is particularly valid for duplication, translation, micro-filming and feeding and processing in electronic systems.

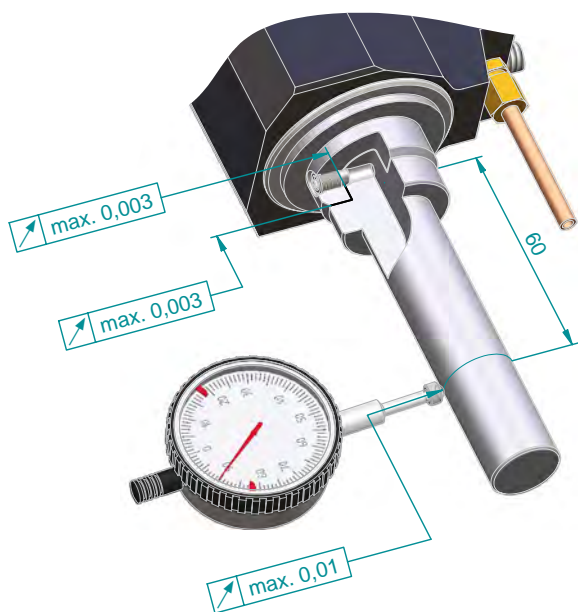
heimatec[®] GmbH reserves the right of technical changes everytime without advance notice, which is particularly valid for adaptations to new or changed international standards, or to developments of our products or manufacturing process.

Bezeichnung type	Seite page
<i>easy-quick</i> Info	2
<i>easy-quick</i> HT 2	5
<i>easy-quick</i> HT 3	9
<i>easy-quick</i> HT 4	13
<i>easy-quick</i> HT 5	19
<i>easy-quick</i> HT 6	25
<i>easy-quick</i> HT 7	31
Symbolbeschreibung description of symbol	37

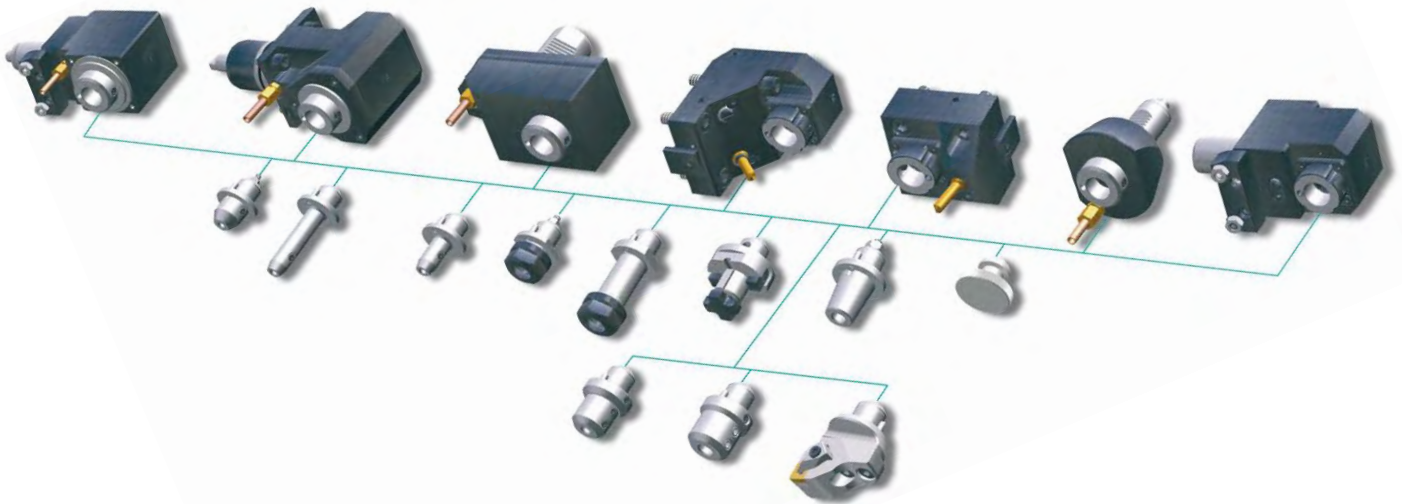
„Ein Schnellwechselsystem das seinen Namen verdient!“



„A quick change system that it is worth to own its name!“



- ▶ Einhandbedienung
single-hand operation
- ▶ Voreinstellbar
pre-settable
- ▶ Höchste Wiederhol- und Rundlaufgenauigkeit
highest repeatability and radial run-out precision
- ▶ Enorme Steifigkeit und Stabilität
tremendous rigidity and solidity



Unser Schnellwechselsystem spart Zeit und Geld!

Zeitersparnis:

Durch das Lösen von nur einer einzigen Schraube lässt sich der easy-quick HT-Einsatz auswechseln.
Exakte Voreinstellbarkeit der Wechseleinsätze ausserhalb der Maschine.

Das Werkzeug verbleibt auf der Maschine, zeitaufwendiges Ausrichten der Werkzeuge entfällt.

Maschinenstillstandzeiten werden so auf ein Minimum reduziert.

Kostensparnis:

Niedrige Anschaffungskosten
Minimierung der Rüstkosten
Reduzierung der Gesamtwerkzeugkosten
Geringe Lagerhaltungskosten

Das Verletzungsrisiko beim Werkzeugwechsel wird minimiert.

easy-quick bietet Ihnen ein Höchstmaß an Flexibilität!

Unser Schnellwechselsystem ist derzeit in 6 verschiedenen Größen erhältlich:

HT2 HT3 HT4 HT5 HT6 HT7

Die Einsätze sind in allen gängigen Werkzeugaufnahmen erhältlich, z.B.:

- Spannzangenaufnahmen (auch verlängert)
- Spannzangenaufnahmen mit Längenausgleich zum Gewindeschneiden
- Weldon/Whistle Notch (auch verlängert)
- Kombidorner
- Rohlinge

Kombinierte Kühlmittelzufuhr bei allen Größen und Werkzeugaufnahmen!

Die Wechseleinsätze sind nicht nur auf angetriebenen, sondern auch auf festen Werkzeugen einsetzbar.

Selbstverständlich erarbeiten wir mit Ihnen auch Sonderlösungen, speziell auf Ihre Anforderungen zugeschnitten.

Our quick change system saves time and money!

Time saving:

The easy-quick HT insert can be changed by unthreading just one bolt.

Precise pre-setting of interchangeable inserts outside the machine.

The tool remains in the machine, which eliminates the rather time-consuming adjustment of tools.

Thus machine downtimes are minimized.

Cost saving:

Low acquisition cost
Minimized tooling times
Reduction of total tool expenses
Low stockholding costs

Minimized risk of injury involved with tool changes.

easy-quick offers the highest degree of flexibility

Our quick change system is obtainable in six variant sizes:

HT2 HT3 HT4 HT5 HT6 HT7

Inserts are obtainable with all common tool holders such as e.g.:

- Collet chucks (also extended type)
- Collet chucks with length compensation for tapping
- Weldon/Whistle Notch (also extended type)
- universal arbor
- Blanks

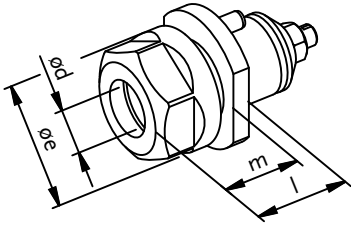
Combined coolant supply for all sizes and tool holders!
The interchangeable inserts are suitable for both driven and static tools.

We will be pleased to offer you special solutions tailored to your requirements.

easy-quick

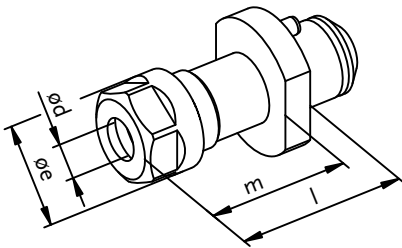
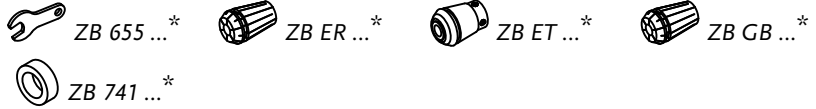
HT 2

► Schnittstelle: *easy-quick* HT 2
interface: *easy-quick* HT 2



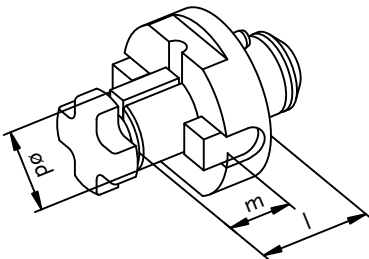
► Spannzangenaufnahme
collet chuck

Spannsystem clamping system	Bestell-Nr. ref.-no.	ø d [mm]	ø e [mm]	l [mm]	m [mm]
ER 8 M	8 779 42 003	0,5 - 5,0	12,0	17,0	13,0
ER 11	8 779 43 002	0,5 - 7,0	19,0	17,5	13,5



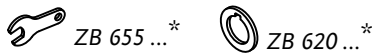
► Spannzangenaufnahme lang
collet chuck long

Spannsystem clamping system	Bestell-Nr. ref.-no.	ø d [mm]	ø e [mm]	l [mm]	m [mm]
ER 8 M	8 779 42 005	0,5 - 5,0	12,0	40,0	36,0



► Fräsdorn
arbor

Spannsystem clamping system	Bestell-Nr. ref.-no.	ø d [mm]	l [mm]	m [mm]
Fräsdorn 10 / arbor 10	8 779 42 001	10,0	21,0	16,0
Fräsdorn 13 / arbor 13	8 779 43 001	13,0	26,0	21,0



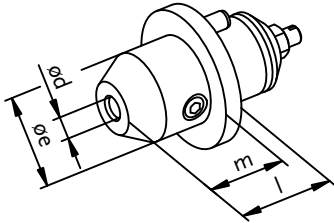
Darstellung symbolisch
symbolic drawing

* Nicht im Lieferumfang enthalten
* not included in delivery

► Weitere Ausführungen auf Anfrage
further versions on request

ZB HT 2 4 000

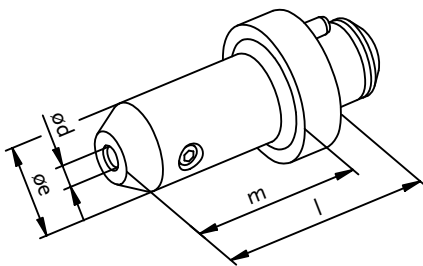
- ▶ Schnittstelle: *easy-quick* HT 2
interface: *easy-quick* HT 2



- ▶ Weldon
Weldon

Spannsystem clamping system	Bestell-Nr. ref.-no.	$\varnothing d$ [mm]	$\varnothing e$ [mm]	l [mm]	m [mm]
Weldon / Whistle Notch 6	8 779 42 000	6,0	24,0	17,0	–
Weldon / Whistle Notch 8	8 779 43 000	8,0	24,0	18,0	–

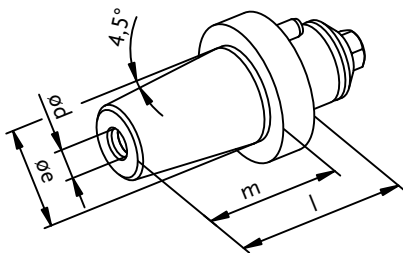
- ▶ Weitere Abmessungen ab $\varnothing d=3$ mm auf Anfrage
further dimension from $\varnothing d=3$ mm on request



- ▶ Weldon lang
Weldon long

Spannsystem clamping system	Bestell-Nr. ref.-no.	$\varnothing d$ [mm]	$\varnothing e$ [mm]	l [mm]	m [mm]
Weldon / Whistle Notch 6	8 779 42 004	6,0	25,0	40,0	–

- ▶ Weitere Abmessungen ab $\varnothing d=3$ mm auf Anfrage
further dimension from $\varnothing d=3$ mm on request



- ▶ Schrumpffutter
shrinking chuck

Nenngröße nominal size	Bestell-Nr. ref.-no.	$\varnothing d$ [mm]	$\varnothing e$ [mm]	l [mm]	m [mm]
6	8 779 42 006	6,0	24,0	38,0	34,0
8	8 779 43 004	8,0	24,0	38,0	34,0

- ▶ Weitere Abmessungen ab $\varnothing d=3$ mm auf Anfrage
further dimension from $\varnothing d=3$ mm on request

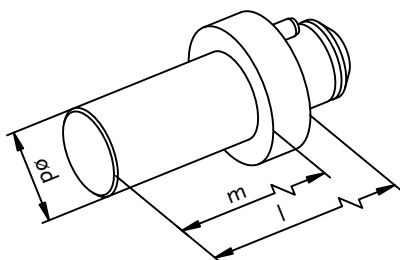


Darstellung symbolisch
symbolic drawing

- * Nicht im Lieferumfang enthalten
* not included in delivery

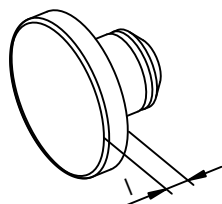
- ▶ Weitere Ausführungen auf Anfrage
further versions on request

- Schnittstelle: *easy-quick* HT 2
interface: *easy-quick* HT 2



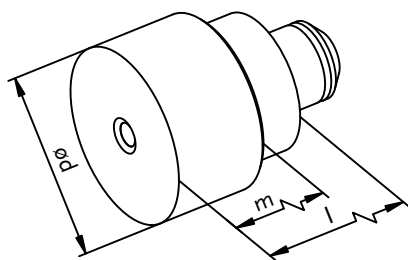
- Prüfdorn
test mandrel

Nenngröße nominal size	Bestell-Nr. ref.-no.	ø d [mm]	l [mm]	m [mm]
15	8 208 44 000	15,0	80,0	70,0



- Verschlussstopfen
plug

Bestell-Nr. ref.-no.	l [mm]
8 779 49 000	5,0



- Rohling
blank

Nenngröße nominal size	Bestell-Nr. ref.-no.	ø d [mm]	l [mm]	m [mm]
30	8 779 49 001	30,0	80,0	72,0



Darstellung symbolisch
symbolic drawing

- * Nicht im Lieferumfang enthalten
- * not included in delivery

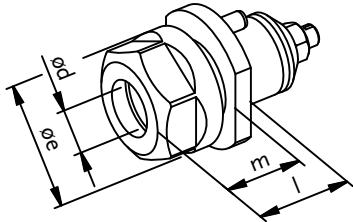
- Weitere Ausführungen auf Anfrage
further versions on request

ZB HT 2 4 000

easy-quick

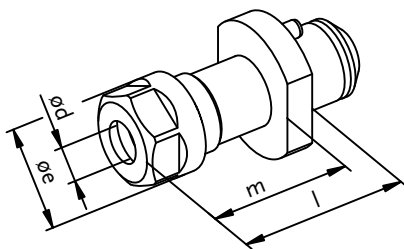
HT 3

- ▶ Schnittstelle: *easy-quick* HT 3
interface: *easy-quick* HT 3



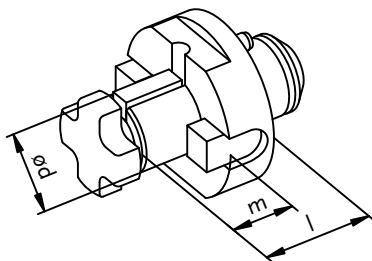
- ▶ Spannzangenaufnahme
collet chuck

Spannsystem clamping system	Bestell-Nr. ref.-no.	ø d [mm]	ø e [mm]	l [mm]	m [mm]
ER 11	8 779 53 005	0,5 - 7,0	19,0	19,0	15,0
ER 16	8 779 54 000	0,5 - 10,0	28,0	25,5	21,5



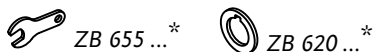
- ▶ Spannzangenaufnahme lang
collet chuck long

Spannsystem clamping system	Bestell-Nr. ref.-no.	ø d [mm]	ø e [mm]	l [mm]	m [mm]
ER 8 M	8 779 52 004	0,5 - 5,0	12,0	60,0	56,0
ER 11	8 779 53 007	0,5 - 7,0	19,0	60,0	56,0



- ▶ Fräsdorn
arbor

Spannsystem clamping system	Bestell-Nr. ref.-no.	ø d [mm]	l [mm]	m [mm]
Fräsdorn 10 / arbor 10	8 779 52 005	10,0	21,0	16,0
Fräsdorn 13 / arbor 13	8 779 53 001	13,0	26,0	21,0
Kombidorn 16 / universal arbor 16	8 779 54 001	16,0	31,0	17,0



Darstellung symbolisch
symbolic drawing

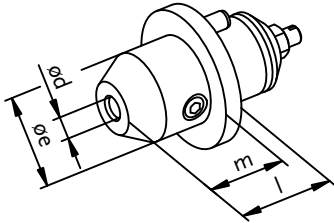
- * Nicht im Lieferumfang enthalten
* not included in delivery

- ▶ Weitere Ausführungen auf Anfrage
further versions on request

ZB HT 3 5 000

Wechseleinsätze für *easy-quick* inserts for *easy-quick*

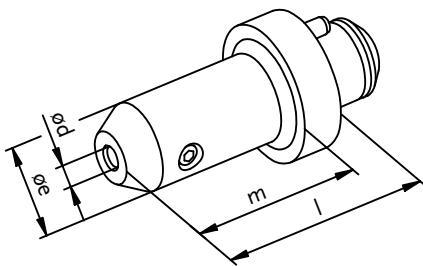
- ▶ Schnittstelle: *easy-quick* HT 3
interface: *easy-quick* HT 3



- ▶ Weldon
Weldon

Spannsystem clamping system	Bestell-Nr. ref.-no.	$\varnothing d$ [mm]	$\varnothing e$ [mm]	l [mm]	m [mm]
Weldon / Whistle Notch 6	8 779 52 000	6,0	25,0	28,0	22,5
Weldon / Whistle Notch 8	8 779 53 003	8,0	28,0	28,0	23,0
Weldon / Whistle Notch 10	8 779 54 002	10,0	31,0	28,0	–
Weldon / Whistle Notch 12	8 779 54 003	12,0	34,0	28,0	–

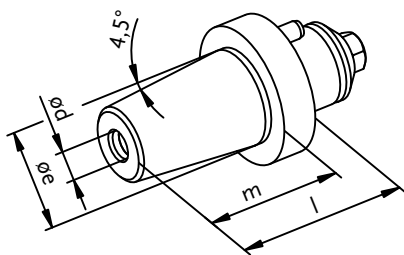
- ▶ Weitere Abmessungen ab $\varnothing d=3$ mm auf Anfrage
further dimension from $\varnothing d=3$ mm on request



- ▶ Weldon lang
Weldon long

Spannsystem clamping system	Bestell-Nr. ref.-no.	$\varnothing d$ [mm]	$\varnothing e$ [mm]	l [mm]	m [mm]
Weldon / Whistle Notch 6	8 779 52 003	6,0	25,0	60,0	54,0
Weldon / Whistle Notch 8	8 779 53 006	8,0	28,0	60,0	54,0
Weldon / Whistle Notch 10	8 779 54 009	10,0	35,0	60,0	–

- ▶ Weitere Abmessungen ab $\varnothing d=3$ mm auf Anfrage
further dimension from $\varnothing d=3$ mm on request



- ▶ Schrumpffutter
shrinking chuck

Nenngröße nominal size	Bestell-Nr. ref.-no.	$\varnothing d$ [mm]	$\varnothing e$ [mm]	l [mm]	m [mm]
6	8 779 52 006	6,0	27,0	38,0	34,0
8	8 779 53 008	8,0	27,0	38,0	34,0
10	8 779 54 010	10,0	27,0	38,0	34,0
12	8 779 54 011	12,0	30,0	43,0	39,0

- ▶ Weitere Abmessungen ab $\varnothing d=3$ mm auf Anfrage
further dimension from $\varnothing d=3$ mm on request

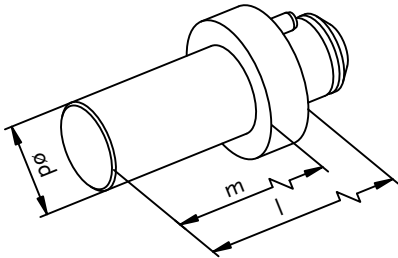


Darstellung symbolisch
symbolic drawing

- * Nicht im Lieferumfang enthalten
* not included in delivery

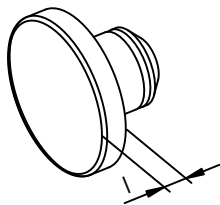
- ▶ Weitere Ausführungen auf Anfrage
further versions on request

- Schnittstelle: *easy-quick* HT 3
interface: *easy-quick* HT 3



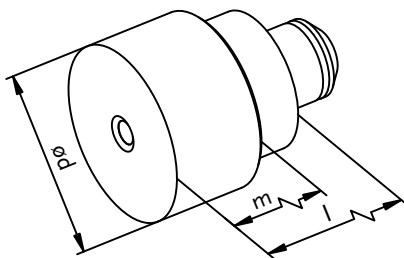
- Prüfdorn
test mandrel

Nenngröße nominal size	Bestell-Nr. ref.-no.	ø d [mm]	l [mm]	m [mm]
20	8 208 56 000	20,0	100,0	90,0



- Verschlussstopfen
plug

Bestell-Nr. ref.-no.	l [mm]
8 779 59 000	6,0



- Rohling
blank

Nenngröße nominal size	Bestell-Nr. ref.-no.	ø d [mm]	l [mm]	m [mm]
40	8 779 59 001	40,0	100,0	92,0



Darstellung symbolisch
symbolic drawing

- * Nicht im Lieferumfang enthalten
- * not included in delivery

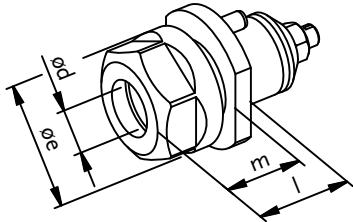
- Weitere Ausführungen auf Anfrage
further versions on request

ZB HT 3 5 000

easy-quick

HT 4

► Schnittstelle: *easy-quick* HT 4
interface: *easy-quick* HT 4

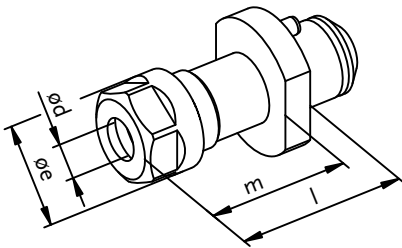


► Spannzangenaufnahme
collet chuck

Spannsystem clamping system	Bestell-Nr. ref.-no.	ø d [mm]	ø e [mm]	l [mm]	m [mm]
ER 16	8 779 64 000	0,5 - 10,0	28,0	26,0	21,0
ER 20	8 779 64 001	0,5 - 13,0	34,0	28,0	23,0
ER 25	8 779 65 001	0,5 - 16,0	42,0	44,0	–



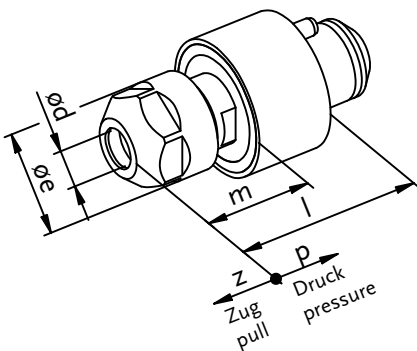
► Spannzangenaufnahme lang
collet chuck long



Spannsystem clamping system	Bestell-Nr. ref.-no.	ø d [mm]	ø e [mm]	l [mm]	m [mm]
ER 11	8 779 63 009	0,5 - 7,0	19,0	70,0	62,0
ER 16	8 779 64 016	0,5 - 10,0	28,0	70,0	62,0
ER 20	8 779 64 012	0,5 - 13,0	34,0	70,0	62,0
ER 25	8 779 65 004	0,5 - 16,0	42,0	70,0	–



► softtap (Gewindefutter)
softtap (tapping chuck)



Spannsystem clamping system	Bestell-Nr. ref.-no.	ø d [mm]	ø e [mm]	l [mm]	m [mm]	z [mm]	p [mm]
ER 16	8 779 64 027	0,5 - 10,0	28,0	55,0	32,0	0,5	0,5



Darstellung symbolisch
symbolic drawing

* Nicht im Lieferumfang enthalten
* not included in delivery

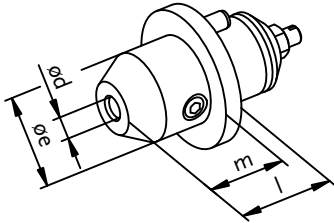
► Weitere Ausführungen auf Anfrage
further versions on request

ZB HT 4 6 000

Wechseleinsätze für *easy-quick*

inserts for *easy-quick*

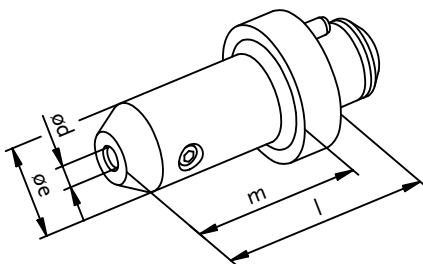
- ▶ Schnittstelle: *easy-quick* HT 4
interface: *easy-quick* HT 4



- ▶ Weldon
Weldon

Spannsystem clamping system	Bestell-Nr. ref.-no.	$\varnothing d$ [mm]	$\varnothing e$ [mm]	l [mm]	m [mm]
Weldon / Whistle Notch 6	8 779 62 000	6,0	25,0	28,0	23,0
Weldon / Whistle Notch 8	8 779 63 000	8,0	28,0	28,0	23,0
Weldon / Whistle Notch 10	8 779 64 002	10,0	39,0	28,0	–
Weldon / Whistle Notch 12	8 779 64 004	12,0	42,0	34,0	–
Weldon / Whistle Notch 14	8 779 64 007	14,0	42,0	34,0	–
Weldon / Whistle Notch 16	8 779 65 000	16,0	48,0	34,0	–

- ▶ Weitere Abmessungen ab $\varnothing d=3$ mm auf Anfrage
further dimension from $\varnothing d=3$ mm on request



- ▶ Weldon lang
Weldon long

Spannsystem clamping system	Bestell-Nr. ref.-no.	$\varnothing d$ [mm]	$\varnothing e$ [mm]	l [mm]	m [mm]
Weldon / Whistle Notch 6	8 779 62 006	6,0	25,0	70,0	60,0
Weldon / Whistle Notch 8	8 779 63 008	8,0	28,0	70,0	60,0
Weldon / Whistle Notch 10	8 779 64 014	10,0	32,0	70,0	60,0
Weldon / Whistle Notch 12	8 779 64 018	12,0	32,0	70,0	60,0

- ▶ Weitere Abmessungen ab $\varnothing d=3$ mm auf Anfrage
further dimension from $\varnothing d=3$ mm on request



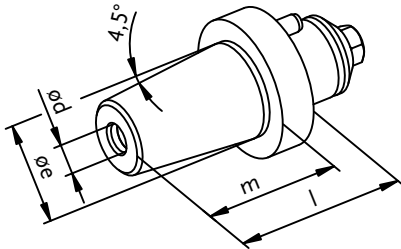
Darstellung symbolisch
symbolic drawing

- * Nicht im Lieferumfang enthalten
* not included in delivery

- ▶ Weitere Ausführungen auf Anfrage
further versions on request

ZB HT 4 6 000

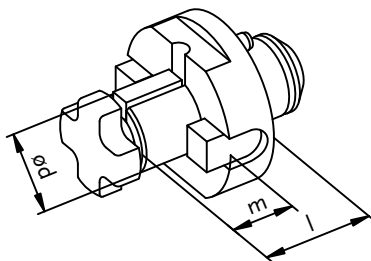
- ▶ Schnittstelle: *easy-quick* HT 4
interface: *easy-quick* HT 4



- ▶ Schrumpffutter
shrinking chuck

Nenngröße nominal size	Bestell-Nr. ref.-no.	ø d [mm]	ø e [mm]	l [mm]	m [mm]
6	8 779 62 007	6,0	27,0	40,0	34,0
8	8 779 63 003	8,0	27,0	40,0	34,0
10	8 779 64 009	10,0	27,0	40,0	34,0
12	8 779 64 017	12,0	30,0	45,0	39,0
14	8 779 64 019	14,0	32,0	50,0	44,0
16	8 779 65 005	16,0	34,0	50,0	44,0

- ▶ Weitere Abmessungen ab ød=3 mm auf Anfrage
further dimension from ød=3 mm on request



- ▶ Fräsdorn
arbor

Spannsystem clamping system	Bestell-Nr. ref.-no.	ø d [mm]	l [mm]	m [mm]
Fräsdorn 10 / arbor 10	8 779 62 005	10,0	26,0	16,0
Fräsdorn 13 / arbor 13	8 779 63 007	13,0	31,0	21,0
Kombidorn 16 / universal arbor 16	8 779 64 005	16,0	31,0	17,0
Kombidorn 22 / universal arbor 22	8 779 65 002	22,0	33,0	19,0



ZB 655 ...*



ZB 620 ...*



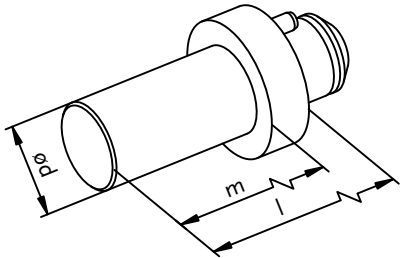
Darstellung symbolisch
symbolic drawing

- * Nicht im Lieferumfang enthalten
* not included in delivery

- ▶ Weitere Ausführungen auf Anfrage
further versions on request

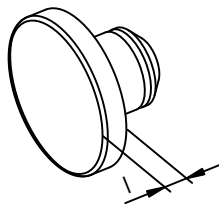
ZB HT 4 6 000

- ▶ Schnittstelle: *easy-quick* HT 4
interface: *easy-quick* HT 4



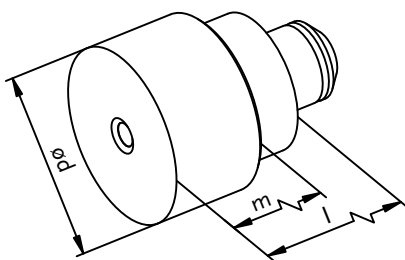
- ▶ Prüfdorn
test mandrel

Nenngröße nominal size	Bestell-Nr. ref.-no.	ø d [mm]	l [mm]	m [mm]
25	8 208 67 000	25,0	120,0	108,0



- ▶ Verschlussstopfen
plug

Bestell-Nr. ref.-no.	l [mm]
8 779 69 000	7,0



- ▶ Rohling
blank

Nenngröße nominal size	Bestell-Nr. ref.-no.	ø d [mm]	l [mm]	m [mm]
50	8 779 69 002	50,0	120,0	108,0



Darstellung symbolisch
symbolic drawing

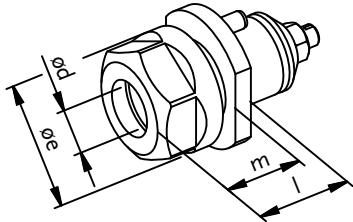
- * Nicht im Lieferumfang enthalten
- * not included in delivery

- ▶ Weitere Ausführungen auf Anfrage
further versions on request

easy-quick

HT 5

- Schnittstelle: *easy-quick* HT 5
interface: *easy-quick* HT 5

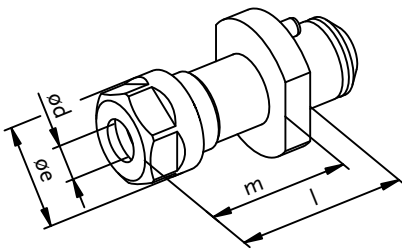


- Spannzangenaufnahme
collet chuck

Spannsystem clamping system	Bestell-Nr. ref.-no.	ø d [mm]	ø e [mm]	l [mm]	m [mm]
ER 20	8 779 74 002	0,5 - 13,0	34,0	29,0	23,0
ER 25	8 779 75 001	0,5 - 16,0	42,0	30,0	24,0
ER 32	8 779 76 002	1,0 - 20,0	50,0	54,0	–



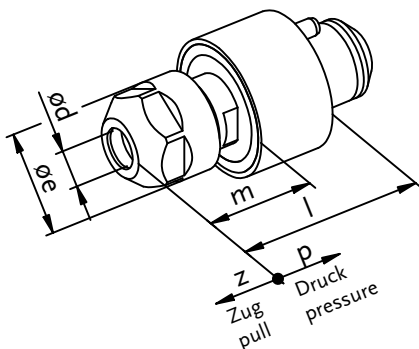
- Spannzangenaufnahme lang
collet chuck long



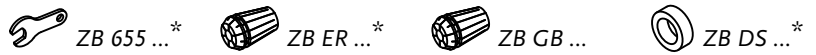
Spannsystem clamping system	Bestell-Nr. ref.-no.	ø d [mm]	ø e [mm]	l [mm]	m [mm]
ER 16	8 779 74 006	0,5 - 10,0	28,0	70,0	64,0
ER 20	8 779 74 018	0,5 - 13,0	34,0	70,0	64,0
ER 25	8 779 75 010	0,5 - 16,0	42,0	70,0	64,0



- softtap (Gewindefutter)
softtap (tapping chuck)



Spannsystem clamping system	Bestell-Nr. ref.-no.	ø d [mm]	ø e [mm]	l [mm]	m [mm]	z [mm]	p [mm]
ER 16	8 779 74 021	0,5 - 10,0	28,0	55,0	32,0	0,5	0,5



Darstellung symbolisch
symbolic drawing

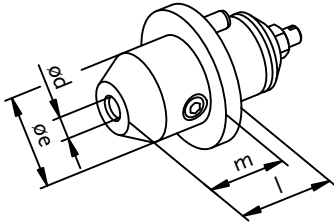
- * Nicht im Lieferumfang enthalten
* not included in delivery

- Weitere Ausführungen auf Anfrage
further versions on request

ZB HT 5 7 000

Wechseleinsätze für *easy-quick* inserts for *easy-quick*

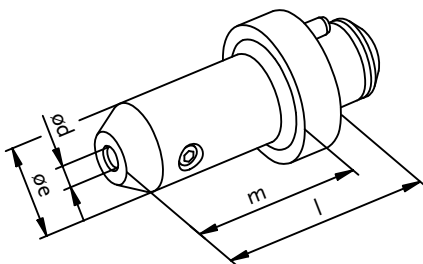
- ▶ Schnittstelle: *easy-quick* HT 5
interface: *easy-quick* HT 5



- ▶ Weldon
Weldon

Spannsystem clamping system	Bestell-Nr. ref.-no.	$\varnothing d$ [mm]	$\varnothing e$ [mm]	l [mm]	m [mm]
Weldon / Whistle Notch 6	8 779 72 000	6,0	25,0	28,0	23,0
Weldon / Whistle Notch 8	8 779 73 000	8,0	28,0	28,0	23,0
Weldon / Whistle Notch 10	8 779 74 001	10,0	49,0	28,0	–
Weldon / Whistle Notch 12	8 779 74 000	12,0	49,0	28,0	–
Weldon / Whistle Notch 14	8 779 74 005	14,0	50,0	28,0	–
Weldon / Whistle Notch 16	8 779 75 000	16,0	49,0	28,0	–
Weldon / Whistle Notch 18	8 779 75 002	18,0	50,0	34,0	–
Weldon / Whistle Notch 20	8 779 76 001	20,0	49,0	36,0	–

- ▶ Weitere Abmessungen ab $\varnothing d=3$ mm auf Anfrage
further dimension from $\varnothing d=3$ mm on request



- ▶ Weldon lang
Weldon long

Spannsystem clamping system	Bestell-Nr. ref.-no.	$\varnothing d$ [mm]	$\varnothing e$ [mm]	l [mm]	m [mm]
Weldon / Whistle Notch 6	8 779 72 001	6,0	25,0	70,0	60,0
Weldon / Whistle Notch 8	8 779 73 001	8,0	28,0	70,0	60,0
Weldon / Whistle Notch 10	8 779 74 007	10,0	32,0	70,0	60,0
Weldon / Whistle Notch 12	8 779 74 008	12,0	32,0	70,0	60,0
Weldon / Whistle Notch 14	8 779 74 017	14,0	44,0	70,0	60,0
Weldon / Whistle Notch 16	8 779 75 009	16,0	48,0	70,0	60,0

- ▶ Weitere Abmessungen ab $\varnothing d=3$ mm auf Anfrage
further dimension from $\varnothing d=3$ mm on request



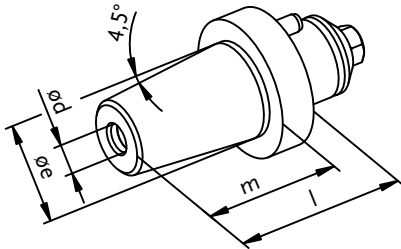
Darstellung symbolisch
symbolic drawing

- * Nicht im Lieferumfang enthalten
* not included in delivery

- ▶ Weitere Ausführungen auf Anfrage
further versions on request

ZB HT 5 7 000

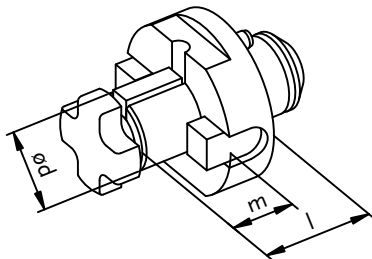
- ▶ Schnittstelle: *easy-quick* HT 5
interface: *easy-quick* HT 5



- ▶ Schrumpffutter
shrinking chuck

Nenngröße nominal size	Bestell-Nr. ref.-no.	ø d [mm]	ø e [mm]	l [mm]	m [mm]
6	8 779 72 004	6,0	27,0	40,0	34,0
8	8 779 73 003	8,0	27,0	40,0	34,0
10	8 779 74 009	10,0	27,0	40,0	34,0
12	8 779 74 010	12,0	30,0	45,0	39,0
14	8 779 74 019	14,0	32,0	50,0	44,0
16	8 779 75 008	16,0	34,0	50,0	44,0
18	8 779 75 011	18,0	42,0	50,0	44,0
20	8 779 76 004	20,0	42,0	50,0	44,0

- ▶ Weitere Abmessungen ab ød=3 mm auf Anfrage
further dimension from ød=3 mm on request



- ▶ Fräsdorn
arbor

Spannsystem clamping system	Bestell-Nr. ref.-no.	ø d [mm]	l [mm]	m [mm]
Kombidorn 16	8 779 74 003	16,0	31,0	17,0
Kombidorn 22	8 779 75 003	22,0	33,0	19,0
Kombidorn 27	8 779 76 005	27,0	40,0	21,0



ZB 655 ...*



ZB 620 ...*



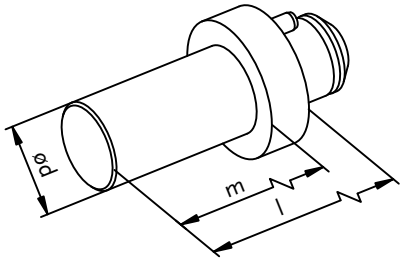
Darstellung symbolisch
symbolic drawing

- * Nicht im Lieferumfang enthalten
* not included in delivery

- ▶ Weitere Ausführungen auf Anfrage
further versions on request

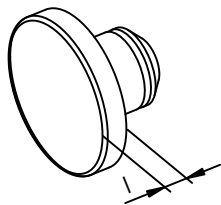
ZB HT 5 7 000

- ▶ Schnittstelle: *easy-quick* HT 5
interface: *easy-quick* HT 5



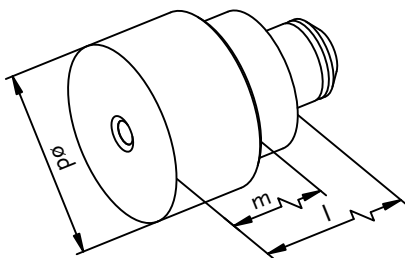
- ▶ Prüfdorn
test mandrel

Nenngröße nominal size	Bestell-Nr. ref.-no.	ø d [mm]	l [mm]	m [mm]
30	8 208 77 000	30,0	150,0	138,0



- ▶ Verschlussstopfen
plug

Bestell-Nr. ref.-no.	l [mm]
8 779 79 002	7,0



- ▶ Rohling
blank

Nenngröße nominal size	Bestell-Nr. ref.-no.	ø d [mm]	l [mm]	m [mm]
63	8 779 79 003	63,0	140,0	128,0



Darstellung symbolisch
symbolic drawing

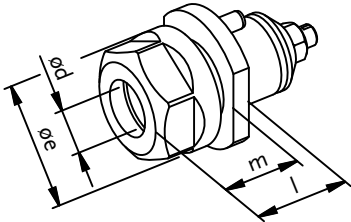
- * Nicht im Lieferumfang enthalten
- * not included in delivery

- ▶ Weitere Ausführungen auf Anfrage
further versions on request

easy-quick

HT 6

- ▶ Schnittstelle: easy-quick HT 6
interface: *easy-quick* HT 6

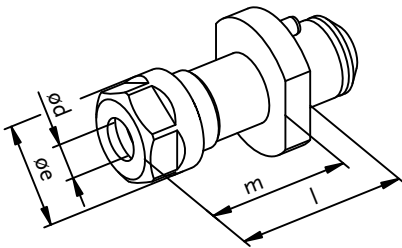


- ▶ Spannzangenaufnahme
collet chuck

Spannsystem clamping system	Bestell-Nr. ref.-no.	$\varnothing d$ [mm]	$\varnothing e$ [mm]	l [mm]	m [mm]
ER 20	8 779 84 000	0,5 - 13,0	34,0	31,5	23,5
ER 25	8 779 85 000	0,5 - 16,0	42,0	32,0	24,0
ER 32	8 779 86 000	1,0 - 20,0	50,0	35,0	27,0
ER 40	8 779 87 001	2,0 - 30,0	63,0	59,0	43,0



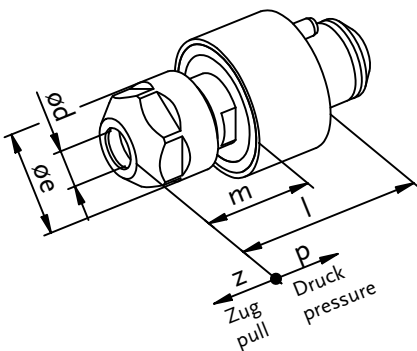
- ▶ Spannzangenaufnahme lang
collet chuck long



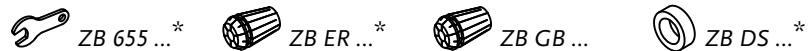
Spannsystem clamping system	Bestell-Nr. ref.-no.	$\varnothing d$ [mm]	$\varnothing e$ [mm]	l [mm]	m [mm]
ER 16	8 779 84 010	0,5 - 10,0	28,0	70,0	60,0
ER 20	8 779 84 011	0,5 - 13,0	34,0	70,0	60,0
ER 25	8 779 85 008	0,5 - 16,0	42,0	70,0	60,0
ER 32	8 779 86 005	1,0 - 20,0	50,0	70,0	60,0



- ▶ softtap (Gewindefutter)
softtap (tapping chuck)



Spannsystem clamping system	Bestell-Nr. ref.-no.	$\varnothing d$ [mm]	$\varnothing e$ [mm]	l [mm]	m [mm]	z [mm]	p [mm]
ER 16	8 779 84 014	0,5 - 10,0	28,0	48,0	31,7	0,5	0,5



Darstellung symbolisch
symbolic drawing

- * Nicht im Lieferumfang enthalten
* not included in delivery

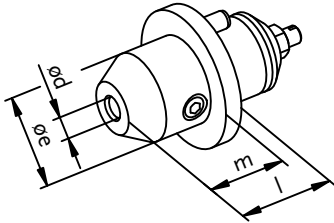
- ▶ Weitere Ausführungen auf Anfrage
further versions on request

ZB HT 6 8 000

Wechseleinsätze für *easy-quick*

inserts for *easy-quick*

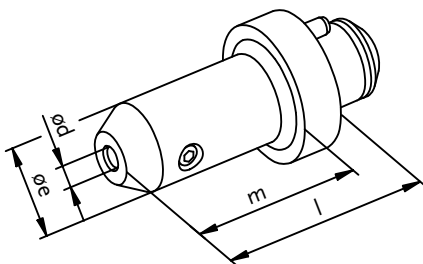
- ▶ Schnittstelle: *easy-quick* HT 6
interface: *easy-quick* HT 6



- ▶ Weldon
Weldon

Spannsystem clamping system	Bestell-Nr. ref.-no.	$\varnothing d$ [mm]	$\varnothing e$ [mm]	l [mm]	m [mm]
Weldon / Whistle Notch 6	8 779 82 000	6,0	25,0	28,0	23,0
Weldon / Whistle Notch 8	8 779 83 000	8,0	28,0	28,0	23,0
Weldon / Whistle Notch 10	8 779 84 001	10,0	35,0	28,0	22,0
Weldon / Whistle Notch 12	8 779 84 002	12,0	42,0	28,0	23,0
Weldon / Whistle Notch 14	8 779 84 004	14,0	44,0	28,0	22,0
Weldon / Whistle Notch 16	8 779 85 001	16,0	64,0	23,0	–
Weldon / Whistle Notch 18	8 779 85 004	18,0	64,0	23,0	–
Weldon / Whistle Notch 20	8 779 86 002	20,0	64,0	23,0	–
Weldon / Whistle Notch 25	8 779 87 000	25,0	50,0	35,0	23,0
Weldon / Whistle Notch 32	8 779 88 000	32,0	72,0	68,0	–

- ▶ Weitere Abmessungen ab $\varnothing d=3$ mm auf Anfrage
further dimension from $\varnothing d=3$ mm on request



- ▶ Weldon lang
Weldon long

Spannsystem clamping system	Bestell-Nr. ref.-no.	$\varnothing d$ [mm]	$\varnothing e$ [mm]	l [mm]	m [mm]
Weldon / Whistle Notch 6	8 779 82 001	6,0	25,0	70,0	60,0
Weldon / Whistle Notch 8	8 779 83 002	8,0	28,0	70,0	60,0
Weldon / Whistle Notch 10	8 779 84 007	10,0	32,0	70,0	60,0
Weldon / Whistle Notch 12	8 779 84 008	12,0	32,0	70,0	60,0
Weldon / Whistle Notch 14	8 779 84 009	14,0	44,0	70,0	60,0
Weldon / Whistle Notch 16	8 779 85 006	16,0	48,0	70,0	54,0
Weldon / Whistle Notch 18	8 779 85 007	18,0	50,0	70,0	60,0
Weldon / Whistle Notch 20	8 779 86 004	20,0	52,0	70,0	60,0

- ▶ Weitere Abmessungen ab $\varnothing d=3$ mm auf Anfrage
further dimension from $\varnothing d=3$ mm on request



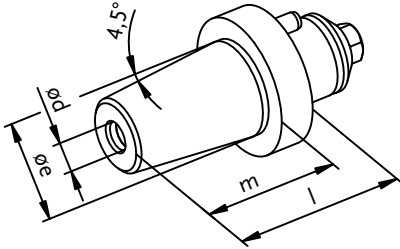
Darstellung symbolisch
symbolic drawing

- * Nicht im Lieferumfang enthalten
* not included in delivery

- ▶ Weitere Ausführungen auf Anfrage
further versions on request

ZB HT 6 8 000

- ▶ Schnittstelle: easy-quick HT 6
interface: *easy-quick* HT 6

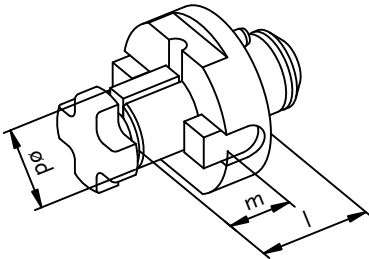


- ▶ Schrumpffutter
shrinking chuck

Nenngröße nominal size	Bestell-Nr. ref.-no.	ø d [mm]	ø e [mm]	l [mm]	m [mm]
6	8 779 82 002	6,0	27,0	42,0	34,0
8	8 779 83 001	8,0	27,0	42,0	34,0
10	8 779 84 006	10,0	27,0	42,0	34,0
12	8 779 84 012	12,0	30,0	47,0	39,0
14	8 779 84 013	14,0	32,0	52,0	44,0
16	8 779 85 005	16,0	34,0	52,0	44,0
18	8 779 85 009	18,0	42,0	52,0	44,0
20	8 779 86 006	20,0	42,0	52,0	44,0
25	8 779 87 003	25,0	53,0	60,0	52,0
32	8 779 88 001	32,0	53,0	70,0	62,0

- ▶ Weitere Abmessungen ab ød=3 mm auf Anfrage
further dimension from ød=3 mm on request

- ▶ Fräsdorn
arbor



Spannsystem clamping system	Bestell-Nr. ref.-no.	ø d [mm]	l [mm]	m [mm]
Kombidorn 16 / universal arbor 16	8 779 84 005	16,0	33,0	17,0
Kombidorn 22 / universal arbor 22	8 779 85 002	22,0	35,0	19,0
Kombidorn 27 / universal arbor 27	8 779 86 003	27,0	40,0	21,0
Kombidorn 32 / universal arbor 32	8 779 87 002	32,0	47,0	24,0



ZB 655 ...*



ZB 620 ...*



Darstellung symbolisch
symbolic drawing

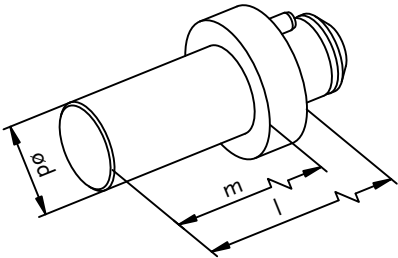
- * Nicht im Lieferumfang enthalten
* not included in delivery

- ▶ Weitere Ausführungen auf Anfrage
further versions on request

ZB HT 6 8 000

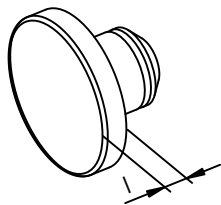
Wechseleinsätze für *easy-quick* inserts for *easy-quick*

- ▶ Schnittstelle: *easy-quick* HT 6
interface: *easy-quick* HT 6



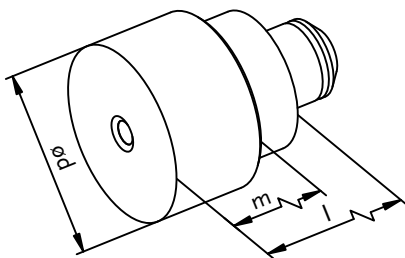
- ▶ Prüfdorn
test mandrel

Nenngröße nominal size	Bestell-Nr. ref.-no.	ø d [mm]	l [mm]	m [mm]
40	8 208 89 000	40,0	200,0	184,0



- ▶ Verschlussstopfen
plug

Bestell-Nr. ref.-no.	l [mm]
8 779 89 000	10,0



- ▶ Rohling
blank

Nenngröße nominal size	Bestell-Nr. ref.-no.	ø d [mm]	l [mm]	m [mm]
80	8 779 89 001	80,0	160,0	145,0



Darstellung symbolisch
symbolic drawing

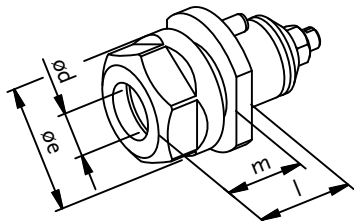
- * Nicht im Lieferumfang enthalten
- * not included in delivery

- ▶ Weitere Ausführungen auf Anfrage
further versions on request

easy-quick

HT 7

► Schnittstelle: *easy-quick* HT 7
interface: *easy-quick* HT 7

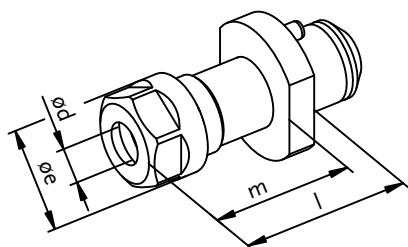


► Spannzangenaufnahme
collet chuck

Spannsystem clamping system	Bestell-Nr. ref.-no.	ø d [mm]	ø e [mm]	l [mm]	m [mm]
ER 25	8 779 95 001	0,5 - 16,0	42,0	38,0	30,0
ER 32	8 779 96 002	1,0 - 20,0	50,0	43,0	35,0
ER 40	8 779 97 002	2,0 - 30,0	63,0	44,0	36,0



easy-quick HT 7



► Spannzangenaufnahme lang
collet chuck long

Spannsystem clamping system	Bestell-Nr. ref.-no.	ø d [mm]	ø e [mm]	l [mm]	m [mm]
ER 20	8 779 94 006	0,5 - 13,0	34,0	80,0	72,0
ER 25	8 779 95 004	0,5 - 16,0	42,0	80,0	72,0
ER 32	8 779 96 005	1,0 - 20,0	50,0	80,0	72,0



Darstellung symbolisch
symbolic drawing

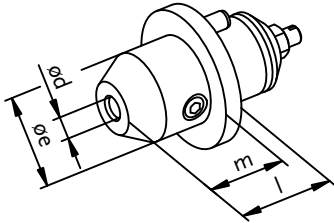
* Nicht im Lieferumfang enthalten
* not included in delivery

► Weitere Ausführungen auf Anfrage
further versions on request

ZB HT 7 9 000

Wechseleinsätze für *easy-quick* inserts for *easy-quick*

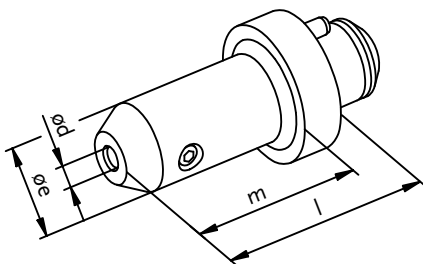
- ▶ Schnittstelle: *easy-quick* HT 7
interface: *easy-quick* HT 7



- ▶ Weldon
Weldon

Spannsystem clamping system	Bestell-Nr. ref.-no.	$\varnothing d$ [mm]	$\varnothing e$ [mm]	l [mm]	m [mm]
Weldon / Whistle Notch 6	8 779 92 000	6,0	25,0	32,0	24,0
Weldon / Whistle Notch 8	8 779 93 000	8,0	28,0	32,0	24,0
Weldon / Whistle Notch 10	8 779 94 001	10,0	35,0	35,0	27,0
Weldon / Whistle Notch 12	8 779 94 000	12,0	42,0	35,0	27,0
Weldon / Whistle Notch 14	8 779 94 002	14,0	44,0	35,0	27,0
Weldon / Whistle Notch 16	8 779 95 000	16,0	48,0	35,0	27,0
Weldon / Whistle Notch 18	8 779 95 003	18,0	50,0	35,0	27,0
Weldon / Whistle Notch 20	8 779 96 000	20,0	52,0	35,0	27,0
Weldon / Whistle Notch 25	8 779 97 000	25,0	72,0	38,0	30,0
Weldon / Whistle Notch 32	8 779 98 000	32,0	72,0	50,0	29,0

- ▶ Weitere Abmessungen ab $\varnothing d=3$ mm auf Anfrage
further dimension from $\varnothing d=3$ mm on request



- ▶ Weldon lang
Weldon long

Spannsystem clamping system	Bestell-Nr. ref.-no.	$\varnothing d$ [mm]	$\varnothing e$ [mm]	l [mm]	m [mm]
Weldon / Whistle Notch 6	8 779 92 001	6,0	25,0	80,0	72,0
Weldon / Whistle Notch 8	8 779 93 001	8,0	28,0	80,0	72,0
Weldon / Whistle Notch 10	8 779 94 003	10,0	35,0	80,0	72,0
Weldon / Whistle Notch 12	8 779 94 004	12,0	42,0	80,0	72,0
Weldon / Whistle Notch 14	8 779 94 005	14,0	44,0	80,0	72,0
Weldon / Whistle Notch 16	8 779 95 005	16,0	48,0	80,0	72,0
Weldon / Whistle Notch 18	8 779 95 006	18,0	50,0	80,0	72,0
Weldon / Whistle Notch 20	8 779 96 004	20,0	52,0	80,0	72,0

- ▶ Weitere Abmessungen ab $\varnothing d=3$ mm auf Anfrage
further dimension from $\varnothing d=3$ mm on request



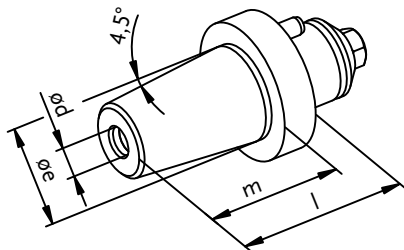
Darstellung symbolisch
symbolic drawing

- * Nicht im Lieferumfang enthalten
* not included in delivery

- ▶ Weitere Ausführungen auf Anfrage
further versions on request

ZB HT 7 9 000

- ▶ Schnittstelle: *easy-quick* HT 7
interface: *easy-quick* HT 7

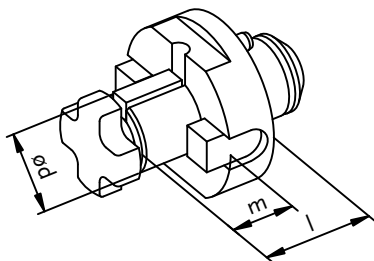


- ▶ Schrumpffutter
shrinking chuck

Nenngröße nominal size	Bestell-Nr. ref.-no.	ø d [mm]	ø e [mm]	l [mm]	m [mm]
6	8 779 92 002	6,0	27,0	42,0	34,0
8	8 779 93 002	8,0	27,0	42,0	34,0
10	8 779 94 007	10,0	27,0	42,0	34,0
12	8 779 94 008	12,0	30,0	47,0	39,0
14	8 779 94 009	14,0	32,0	52,0	44,0
16	8 779 95 007	16,0	34,0	52,0	44,0
18	8 779 95 008	18,0	42,0	52,0	44,0
20	8 779 96 006	20,0	42,0	52,0	44,0
25	8 779 97 003	25,0	53,0	60,0	52,0
32	8 779 98 001	32,0	53,0	70,0	62,0

- ▶ Weitere Abmessungen ab ød=3 mm auf Anfrage
further dimension from ød=3 mm on request

- ▶ Fräsdorn
arbor



Spannsystem clamping system	Bestell-Nr. ref.-no.	ø d [mm]	l [mm]	m [mm]
Kombidorn 22 / universal arbor 22	8 779 95 002	22,0	42,0	19,0
Kombidorn 27 / universal arbor 27	8 779 96 001	27,0	44,0	21,0
Kombidorn 32 / universal arbor 32	8 779 97 001	32,0	47,0	24,0
Kombidorn 40 / universal arbor 40	8 779 98 002	40,0	50,0	27,0



ZB 655 ...*



ZB 620 ...*



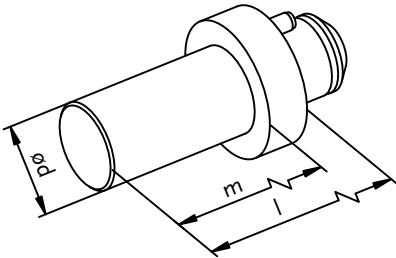
Darstellung symbolisch
symbolic drawing

- * Nicht im Lieferumfang enthalten
* not included in delivery

- ▶ Weitere Ausführungen auf Anfrage
further versions on request

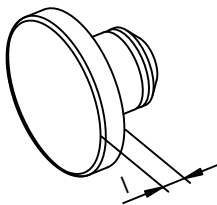
ZB HT 7 9 000

- ▶ Schnittstelle: *easy-quick* HT 7
interface: *easy-quick* HT 7



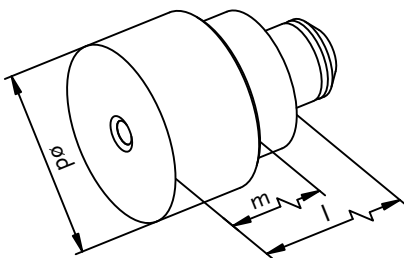
- ▶ Prüfdorn
test mandrel

Nenngröße nominal size	Bestell-Nr. ref.-no.	ø d [mm]	l [mm]	m [mm]
40	8 208 99 000	40,0	200,0	182,0



- ▶ Verschlussstopfen
plug

Bestell-Nr. ref.-no.	l [mm]
8 779 99 000	12,0



- ▶ Rohling
blank

Nenngröße nominal size	Bestell-Nr. ref.-no.	ø d [mm]	l [mm]	m [mm]
100	8 779 99 001	100,0	180,0	165,0













Darstellung symbolisch
symbolic drawing

- * Nicht im Lieferumfang enthalten
- * not included in delivery

- ▶ Weitere Ausführungen auf Anfrage
further versions on request

ZB HT 7 9 000

Symbole symbols	Zubehörblatt accessory sheet
 ZB 655 ...*	Bedienwerkzeuge service tools
 ZB ER ...*	Spannzangen ER-DIN 6499 collets ER-DIN 6499
 ZB ET ...*	Gewindebohrzangen ET-DIN 6499 tapping collets ET-DIN 6499
 ZB GB ...*	Gewindebohrzangen GB tapping collets GB
 ZB 741 ...*	Dichtscheiben sealings
 ZB 771 ...*	Mitnehmer für Gewindebohrer drivers for tap
 ZB 620 ...*	Fräsdornringe milling arbor spacers
 ZB HT ...*	<i>easy-quick</i>
 ZB 776 ...*	Spannzangenfutter collet chuck
 ZB 732 ...*	Reduzierbuchsen reducing sleeves

► *easy-quick*

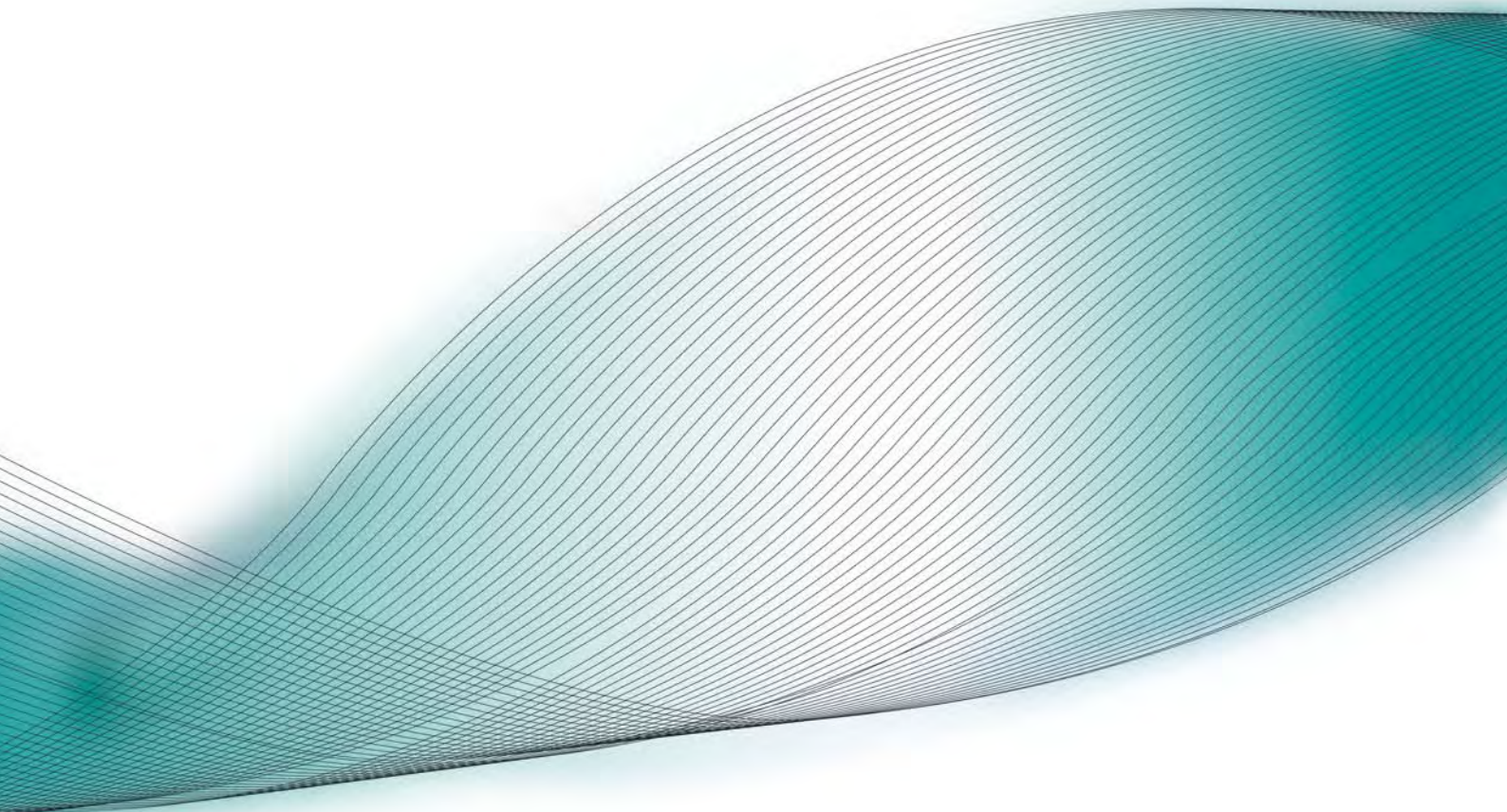
- mit anderen Spannsystemen
with other clamping systems
- mit weiteren Aufnahmegrößen
with different size application
- als Sonderlösung nach Kundenvorgabe
special solution subject to customer requested specification

auf Anfrage
on request



Darstellung symbolisch
symbolic drawing

- * Nicht im Lieferumfang enthalten
- * not included in delivery



heimatec® GmbH
Präzisionswerkzeuge
Carl-Benz-Straße 4
D-77871 Renchen
Postfach 1136
D-77867 Renchen
Tel.: +49 78 43 / 94 66 - 0
Fax.: +49 78 43 / 94 66 - 66
www.heimatec.de
info@heimatec.de